

# Space:Maker Softline™

SLIDING WARDROBE DOOR SYSTEM



## SPACE:MAKER SOFTLINE™

The Good Design Award® is the independent symbol of design excellence and certifies that Space:Maker Softline™ and its variations have exceeded the strict evaluation criteria for design excellence in the following categories:

- Form
- Safety
- Quality
- Innovation
- Function
- Sustainability
- Commerciality

STANDARDS AUSTRALIA ✓





# Space:Maker Softline™

## SLIDING WARDROBE DOOR SYSTEM

### Exceptional Value

Indulge your imagination and create an absolute premium wardrobe design at a surprisingly affordable price.

### Features

- Modern contoured appearance.
- Large 41mm diameter roller and bracket for quiet operation and ease of adjustment.
- Design registered anti-jump tracking device prevents door panels from jumping off the track.
- Matching infill buffers on grip stile.
- Continuous finger grip on all panels.
- Foot friendly, easy to clean track.
- 10 year guarantee on frame and components.
- Recipient of the coveted Australian Good Design Award®.

### Whisper Quiet Roller Operation

Large 41mm diameter roller housed in a strong galvanised metal adjustment bracket, ensures ample roller adjustment and whisper quiet operation at all times. Open design and construction reduces dust accumulation and enables easy cleaning.



### Panel Variety

**Space:Maker Softline™** is available in clear or tinted anti-shatter safety backed mirror panels and coloured safety glass. A wide range of acrylic, wood grain and vinyl finishes are also available. Plain panels for painting or wallpapering are an alternative for the do-it-yourself enthusiast.

### Perfectly Secure Panels

An anti-jump feature, which is incorporated in the head channel spacers, ensures the door panels cannot jump the track and are perfectly aligned providing quiet, rattle-free operation at all times.

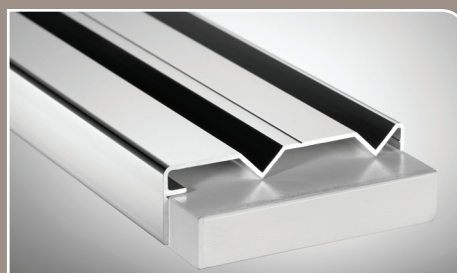


### Design Flexibility

Made to suit your individual requirements. **Space:Maker Softline™** wardrobes are suitable for either wall to wall, freestanding or corner return installations. Constructed from the highest quality Australian made aluminium extrusions, **Space:Maker Softline™** is designed to suit most situations and ceiling heights up to three metres. The continuous finger grip on all door panels provides additional strength and ease of use.

### Low Profile Bottom Track

**Space:Maker Softline™** with foot friendly, unobtrusive, low profile design and easy to clean track, roller side play is virtually eliminated, producing a smoother sliding operation.



### Safety

**Space:Maker Softline™** Sliding Wardrobe Door System is glazed to comply with the requirements of Australian Standards AS1288 and or AS2208.

### Modern Contoured Cushioning

Matching infill buffer with grip stile eliminates metal to metal contact and gives **Space:Maker Softline™** a smooth contemporary contoured appearance.



### Product Guarantee

**Space:Maker Softline™** components and frames carry a 10 year guarantee when used under normal operating conditions.



### Colour Selection

	Black
	Wild Grey
	White Birch
	APO Grey
	Almond Cream
	Almond Ivory
	White
	Bright Satin
	Bright Bronze
	Bright Gold
	Bright Natural
	Matt Bronze
	Matt Gold
	Matt Natural

Special colours available upon request.

**Obligation-free measure & quote** Please call for an obligation-free measure and quote, and also ask for details on matching: **Mirox Fineline™**, Mirror Framing Systems. The Australian Good Design Award® winning **Space:Maker Softline™**, **Mirrorline™**, **Finesse™**, **Strongline™**, **Tri-line™**, **Slimline™**, **Project™**, **Panel Door™**, **Panel-Line™**, **Expressions™** and **Silhouette™** Sliding Wardrobe Door Systems. The Australian Good Design Award® winning **Series 9300™** Sliding/Pivoting Shower Screen Systems range. The Australian Good Design® Selection **Integrity™ 9400** Pivoting Shower Door Systems range. **The FreeStyle™** Shower and Bath Screen Systems. **Profile™ 2040**, **Contour™ 2050**, **Mirage 3050™**, **Eden 3040™**, **Nautilus™ 4010** and **Vogue 5050™** Perimeter Framed Shower Screen Systems

### Available from: